



ESPES

SEPTEMBER 18-20, 2024

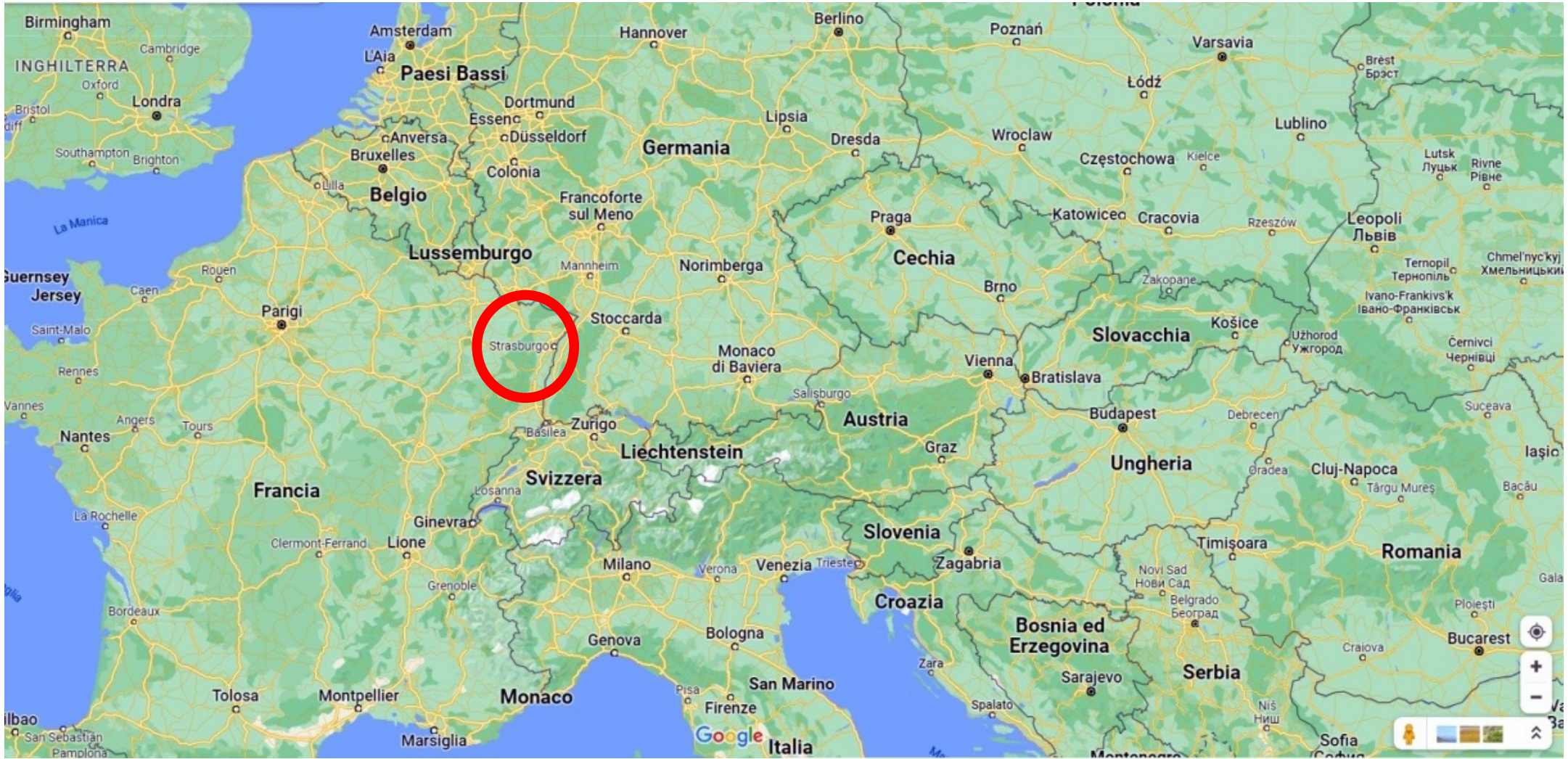


14th
ESPES
ANNUAL
MEETING

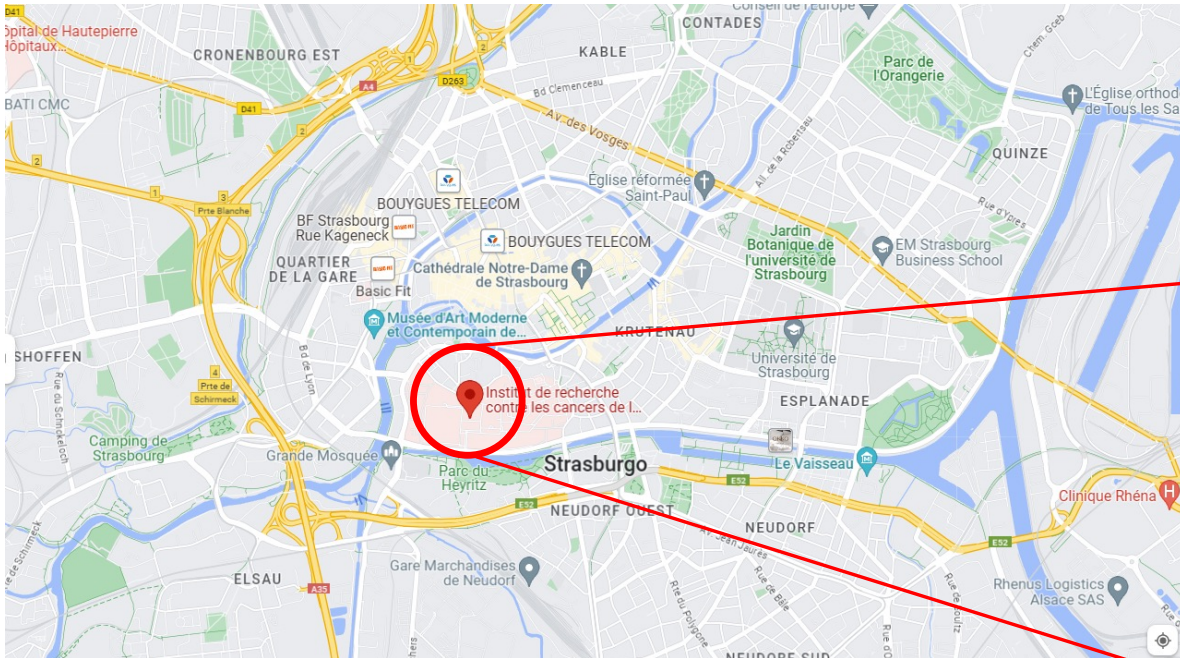


ircad
France

STRASBOURG, FRANCE



WHERE IS IRCAD



Location plan

France



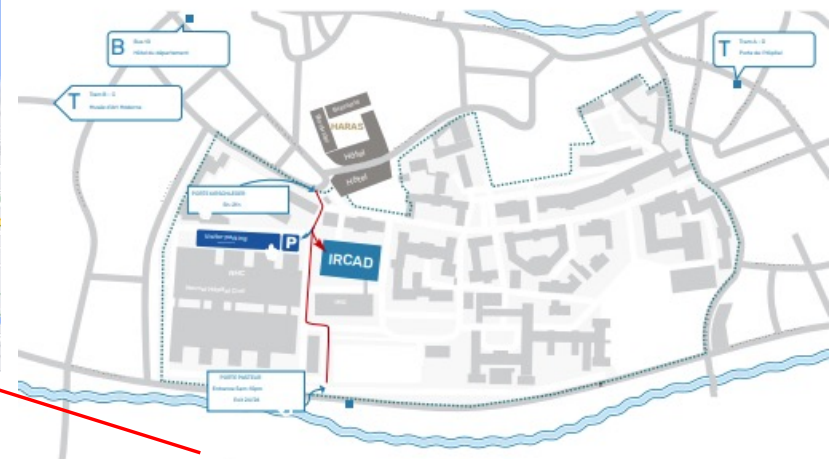
Alsace



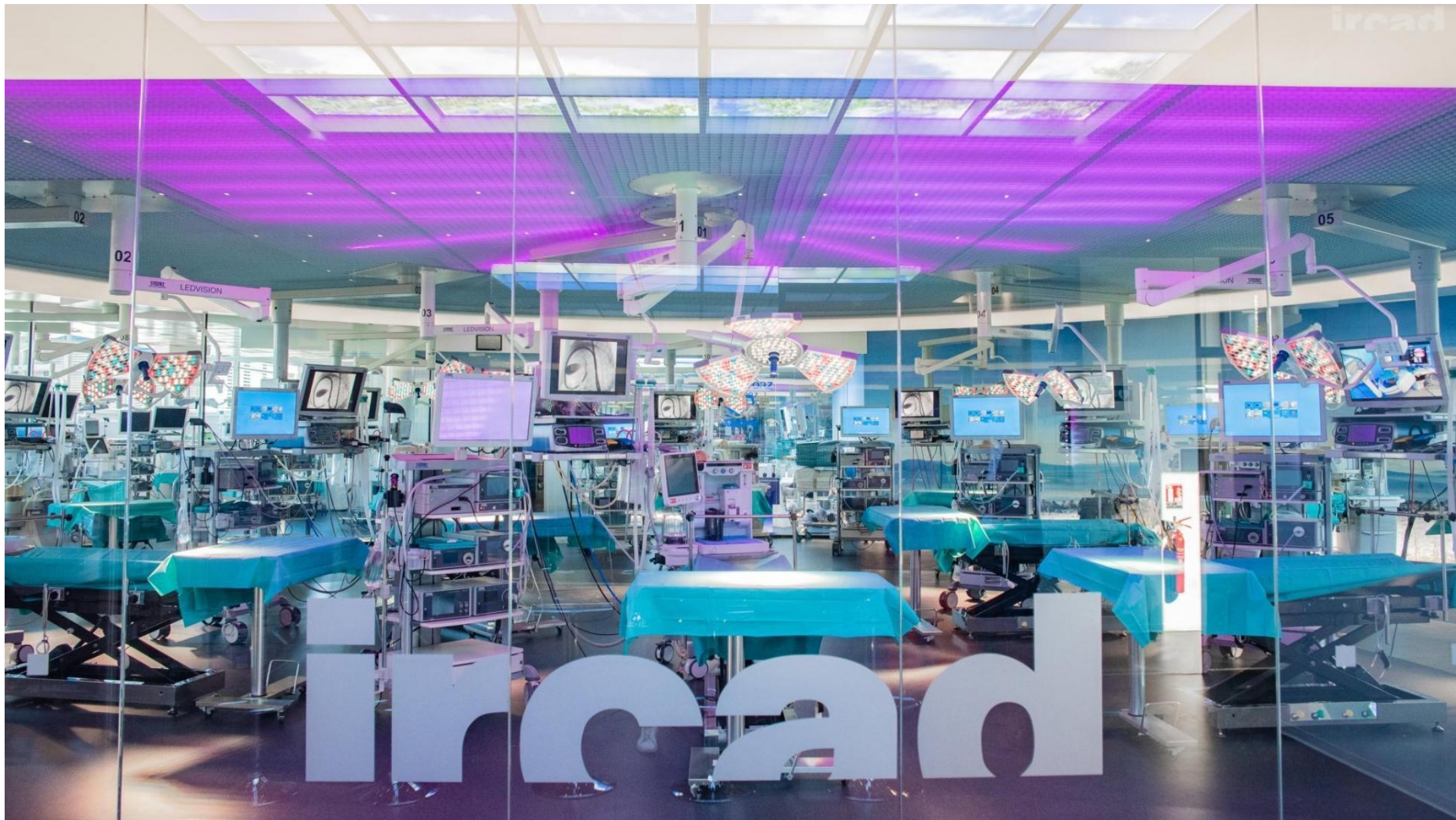
Strasbourg



Hôpital Civil



1, place de l'Hôpital, Hôpitaux Universitaires, 67091 Strasbourg Cedex, FRANCE
Tel : +33 (0)388 119 000
www.ircad.fr





THE NEW AUDITORIUM



ADDITIONAL AUDITORIUMS



AUDIO-VISUAL EQUIPMENT

6 additional rooms

20 – 80 p

Pre-Congress Workshops

Masterclass Urology

Robotic Course

Basic Hands-On Course

European Pediatric MIS Societies

ESPES EB Meeting

Industrial Exhibition

Coffee Breaks and lunches

Gala Dinner



DAY 1 – Wednesday, 18 September

Pre-congress Courses + European Societies Congresses + ESPES EB

8:30 – 13:00	Event	No. Participants	Hall
	Basic Hands-On Course	60	
	Masterclass Urology	50	
	Robotic Course	30 - 40	
10:30 - 11:00	Coffee break		
13:00 – 13:30	LUNCH		
13:30 – 18:00	Event	No. Participants	Hall
	ESPES EB meeting	10	
	SIVI Congress	80 - 100	
	GECI Meeting	20 - 30	
	RSPLS Meeting	20 - 30	
	SSCP + Belgium + NL	20 - 30	
16:00 – 16:30	Coffee break		
19:30	COCKTAIL WELCOME RECEPTION		

CONGRESS PROGRAM

DAY 2	Thursday, 19 September
07:30-08:00	Registration
08:00-08:15	Welcome and opening
08:15-09:00	Session I - Gastrointestinal I
09:00-09:45	Session II - Urology I
09:45-10:15	Keynote Lecture I
10:15-11:00	Session III – Thorax I
11:00-11:30	Coffee break + Commercial Exhibition
11:30-12:15	Session IV - Miscellaneous
12:15-12:30	ESPE Presidential Address
12:30-13:30	Panel I
13:30-14:30	Lunch
14:30-15:15	Session V – Urology II
15:15-16:00	Session VI – Robotics and Innovation I
16:00-16:45	Round Table I
16:45-17:30	Session VII – Complications in MIS
18:00-19:00	Annual General Assembly
21:00	Annual Gala Dinner

CONGRESS PROGRAM

DAY 3	Friday, 20 September
08:00-08:45	Session VIII - Gastrointestinal II
08:45-09:30	Session IX – Urology III
09:30-10:15	Panel II
10:15-11:00	Keynote Lecture II
11:00-11:30	Coffee break + Commercial Exhibition
11:30-12:15	Session X – Robotics and Innovation II
12:15-12:45	Video session I
12:45-13:45	Session XI - Hepatobiliary
13:45-14:45	Lunch
14:45-15:30	Session XII – Thorax II
15:30-16:15	Session XIII – Colorectal
16:15-17:00	Round Table II
17:00-17:45	Session XIV – Gastrointestinal III
18:00-18:15	Awards
18:15-18:30	Closing Remarks

CONGRESS REGISTRATION

Registration fees in Euro:

	EARLY Until 4 March	LATE From 5 March to 16 September	ON SITE 18 September
Member	290 €	330 €	390 €
Non Member	350 €	390 €	450 €
Trainee Member	200 €	240 €	280 €
Trainee Non Member	260 €	300 €	340 €
Low Income Countries	190 €	190 €	190 €
Guest (Accompanying person)	120 €	120 €	120 €

Gala Dinner: 80 Euro per person

PRE-CONGRESS COURSES

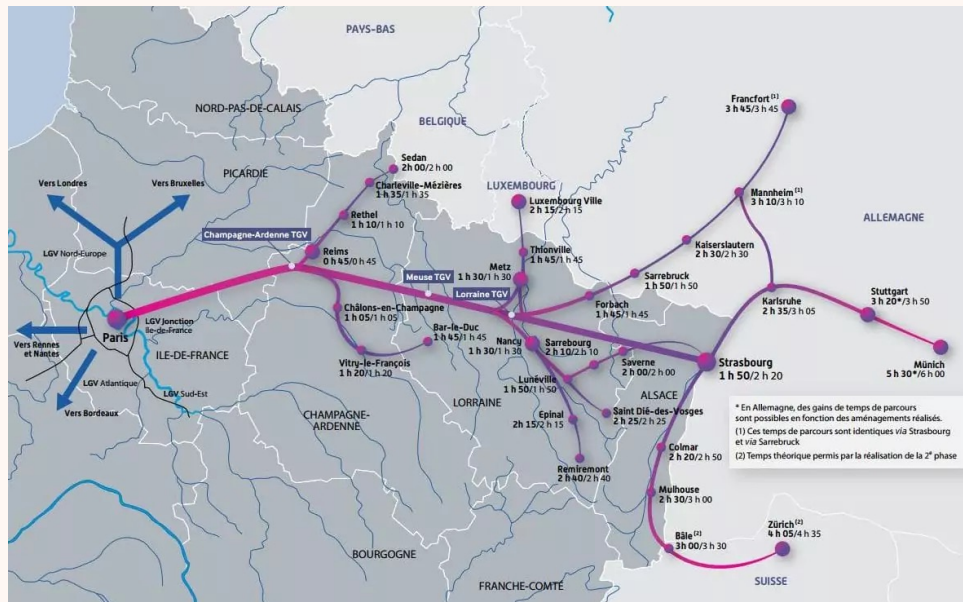
Registration fees in Euro:

	EARLY Until 4 March		LATE From 5 March to 16 September		ON SITE 18 September
	MEMBER	NON MEMBER	MEMBER	NON MEMBER	
MASTERCLASS UROLOGY	100 €	120 €	120 €	140 €	170 €
BASIC HANDS- ON COURSE	90 €	110 €	110 €	130 €	150 €
ROBOTIC COURSE	120 €	140 €	140 €	160 €	190 €



HOW TO REACH STRASBOURG:

By Train

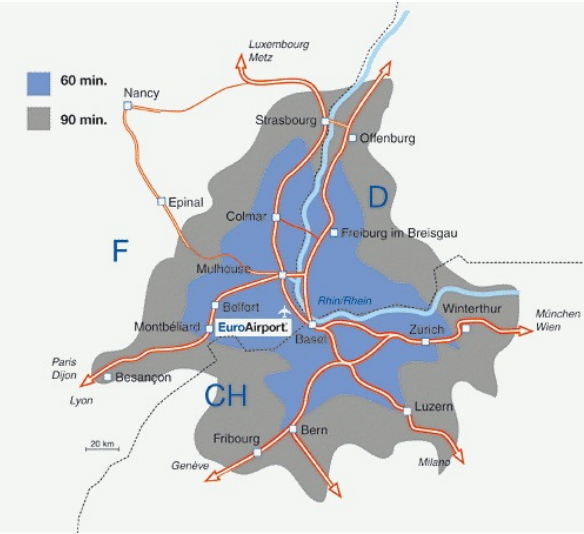


By Airplane

Strasbourg Airport



Euro-Airport Basel /Mulhouse



ACCOMMODATION

These is a list of hotels that will offer the possibility to book a room before March 5th,2024

For further info visit sogehô : <https://sogeho.com/en/>

HOTEL	N° RESERVED ROOMS	N° AVAILABLE ROOMS	PRICE PER NIGHT SINGLE ROOM	PRICE PER NIGHT DOUBLE ROOM
<u>Les Haras****</u>	60		179 €	
<u>Pavillon Régent Petite France*****</u>	8	15	220 €	220 €
<u>Cour du Corbeau****</u>	15	20	210 €	210 €
<u>Léonor****</u>	0	10		
<u>Régent Contades****</u>	0	10		
<u>Le Grand Hôtel***</u>	27	35	120 €	120 €
<u>Holiday Inn****</u>	60		98 €	



www.shutterstock.com - 12621679



THE FOOD



THE ALSACE WINE



COLMAR

WHAT TO VISIT



RIQUEWIHR



CHATEAU DU HAUT-KOENIGSBOURG





ESPE

14th ESPE Annual Congress

18-20 September 2024

Strasbourg, France

